

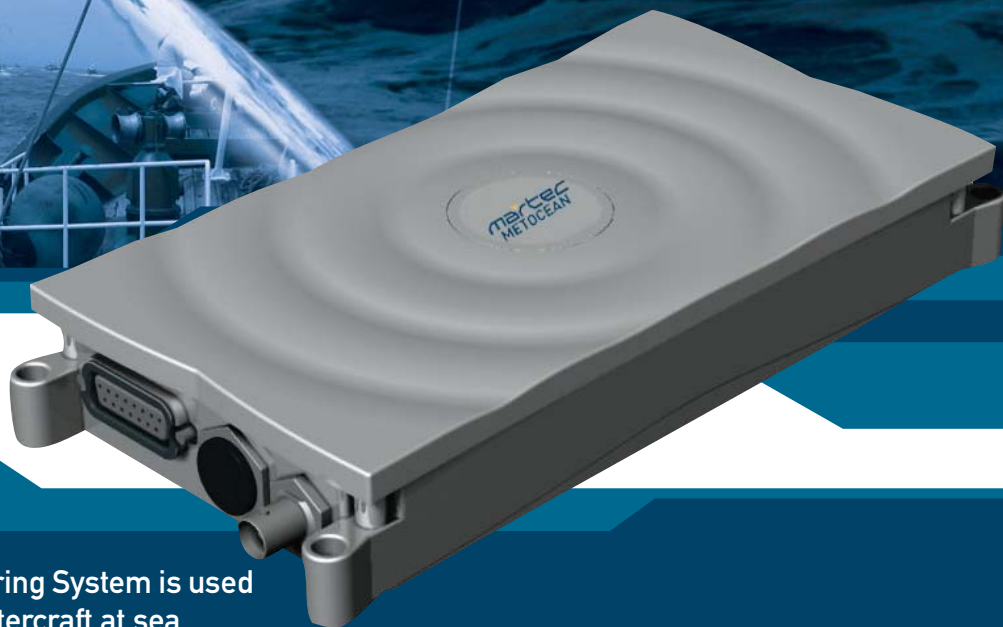
# MetTrac

## VESSEL MONITORING SYSTEM

Reliable and Accurate Position Reports

Automatic Message Generation

NOAA and DFO Approved



METOCEAN's MetTrac Vessel Monitoring System is used to locate commercial and private watercraft at sea.

The VMS system consists of a bi-directional satellite communicator which transmits vessel position reports at specified intervals. The VMS system may be remotely programmed to change the reporting interval. The VMS system consists of a satellite communicator and waterproof antenna. An external battery for backup is provided to maintain all parameters in the case of power failure. The vessel provides normal operating power. The communicator is housed in a hermetically sealed metal container, rated to IP65.

**marTEC METOCEAN**

21 Thornhill Drive  
Dartmouth, Nova Scotia B3B 1R9, CANADA  
Tel: +1 902 468-2505  
Fax: +1 902 468-4442  
www.metocean.com  
sales@metocean.com

# MetTrac

## VESSEL MONITORING SYSTEM

### Key Features

#### Certified by USA and Canadian organizations for monitoring watercraft

An automatically generated message is transmitted 24 times a day consisting of vessel position, heading, speed and time

Two-way communications via satellite telemetry

Message frequency can be updated from shore, to generate and transmit a position at various time frequencies

An LED on the unit provides indication of power on/off and transmits status

Units are GPS-equipped (4 to 6 m CEP, 45 sec cold start)

Data is sent via E-mail and Internet directly to end users

Zone adherence capability provided

Shock and Vibration tested to levels specified as the Industry Standard for Electronic Equipment installed in Heavy-Duty Trucks

Temperature tested from -40°C to + 85°C

Manufactured under ISO 9001 compliance

### Optional Features

Communications port for future expandability, including PC communications and external sensors

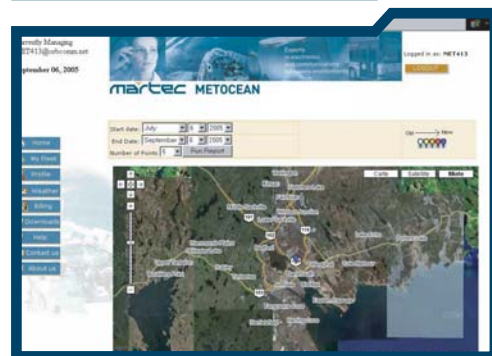
At sea e-mail capability (with vessel supplied PC)

Emergency vessel position trigger

Weather reports

### Technical Specifications

Length	7.08 inches (180 mm)
Width	6.46 inches (164 mm)
Height	1.62 inches (41 mm)
Weight	24.9 ounces (800 grams)
Transmit frequency	148 to 150.05 MHz
Transmit power	5 Watts
Receive frequency	137 to 138 MHz
Dynamic range	40 dB minimum
Sensitivity(minimum)	BER E-5@ -116 dbm
Battery requirements	8 volt Lead Acid Battery (Supplied)
Power requirements	12 to 36 VDC (External Power)
Power use (measured at the battery points)	Transmit 2.5 A max. Standby 90 $\mu$ A/60 $\mu$ A power-save (frame) Sleep 100 A - monitoring 150 A
Position Accuracy	GPS - 50 m (nominal) Doppler - 1000 m (nominal)
Operating temperature	-40 to 85° C (excluding battery)
Non-operating temperature	-40 to 90° C (excluding battery)
Shock &Vibration	Tested to SAE J1455
Type approval	Meets FCC/Orbcomm Type approval Requirements 165STR
EMI /RFI	Meets ETSI standards: EN 300 721 for RF Emissions ETS 300 832 for EMC



**marTEC METOCEAN**

Experts in electronics and communications for severe environments

21 Thornhill Drive - Dartmouth, Nova Scotia B3B 1R9 - CANADA / Tel : +1 902 468 2505 / Fax : +1 902 468 4442

[www.metocean.com](http://www.metocean.com) / [sales@metocean.com](mailto:sales@metocean.com)